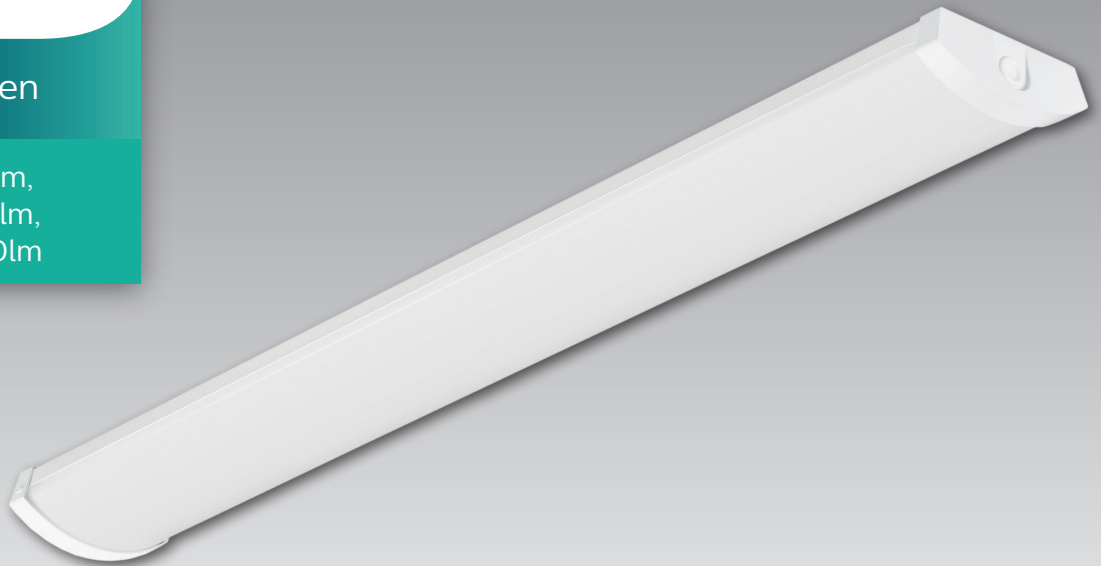


PHILIPS

FastSet Batten

1500lm, 3500lm,
3700lm, 5000lm,
6000lm, 8000lm



The decorative, easy to install LED replacement batten

The FastSet LED decorative batten is the perfect 1:1 replacement for conventional battens. With a wide profile and easy installation it simply fits into all different indoor applications. FastSet can be installed as a standalone luminaire or in a line configuration.

Features & Benefits

- One luminaire which is suitable for standalone or line configuration
- Good light quality and comfort thanks to its wide distribution
- Large terminal block ensures easy loop in loop out termination
- IP40 rating makes the FastSet resilient against dust
- 5 year Warranty

Production Specifications

Model	FastSet Surface Mount (SM150)					
Type	LED15	LED35	LED60	LED37	LED50	LED80
Equivalent of	2X18W Fluorescent	2X36W Fluorescent	2X58W Fluorescent	2X36W Fluorescent	2X58W Fluorescent	
Power	13w	30w	52w	35w	43w	65w
System lumen	1500lm	3500lm	6000lm	3700lm	5000lm	8000lm
Length	602mm	1160mm	1160mm	1440mm	1440mm	1440mm
Power factor	>0.9					
Type	Fixed output (PSU)					
Diffuser	Ribbed Opal Diffuser					
Electrical Class	Class I					
Input Voltage	200V-240V, 50/60Hz					
CCT	4000K (NW)					
CRI	>80					
SDCM	3					
Beam Angle	116°					
Operating Temperature	0°C - 35°C					
Lifetime (L70)*	50,000 hours					
IP /IK rating	IP40/IK03					
Mounting Type	Direct to Ceiling, Suspension by wire or via a 2M Rod					
Electrical Connection	Central cable entry with loop in loop out push-in terminal block					
Housing colour	RAL 9003					
Material	Diffuser: PC					
	Housing: Metal housing					
Application	Education Departments, General offices					

*When a new fitting reaches 70% of full potential

Flicker free Philips Office Elite Products utilise industry best LED drivers that deliver flicker¹ free performance and no stroboscopic effect².

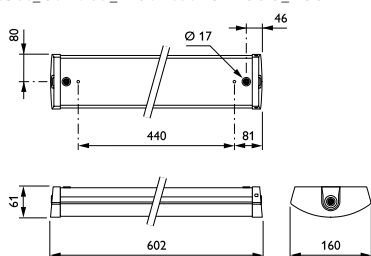
¹ Additionally the Dali standard specifies 8 bit (256 discrete light levels) that can introduce the appearance of Flicker during transitions (dynamic dimming).

Dimming performance is improved with Elite Luminaires by the addition of further bits totalling 32,000 (15bit). These interpolated dimming levels protect against flicker artefacts during light level transitions.

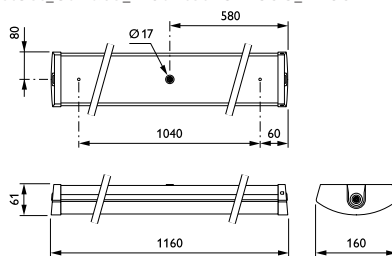
² In the absence of compulsory standards Philips Lighting opted to use the accepted test methods according to IEC TR 61547-1 [1] (Flicker) and IEC TR 61547-1 [5] (Stroboscopic Effect) with the following limits: PstLM ≤ 0.5 and SVM ≤ 1.

Dimensions

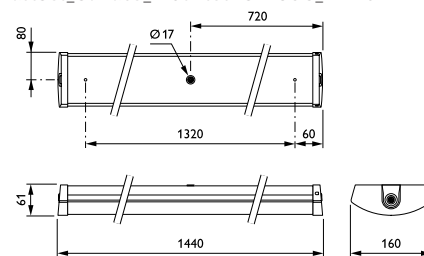
FastSet_Surface_Mounted-SM150C_L602



FastSet_Surface_Mounted-SM150C_L1160



FastSet_Surface_Mounted-SM150C_L1440



Dimensions shown above are nominal measurement. Slight variation in dimension may occur in production.

Order Placement Information

12ncs	Description	Specification
TBC	SM150C LED15S/840 PSU P15 L602	13w, 1500lm, 4000K, fixed output, 2ft
TBC	SM150C LED35S/840 PSU P15 L1160	30w, 3500lm, 4000K, fixed output, 4ft
TBC	SM150C LED60S/840 PSU P15 L1160	52w, 6000lm, 4000k, fixed output, 4ft
TBC	SM150C LED37S/840 PSU P15 L1440	35w, 3700lm, 4000k, fixed output, 5ft
TBC	SM150C LED50S/840 PSU P15 L1440	43w, 5000lm, 4000k, fixed output, 5ft
TBC	SM150C LED80S/840 PSU P15 L1440	65w, 8000lm, 4000k, fixed output, 5ft
TBC	SM150 Rod Suspension kit	2M Rod suspension Kit (2pcs required per fitting)
TBC	SM150 Wire Suspension kit	2M Wire suspension Kit (2pcs required per fitting)

© 2019 Signify Holding. All rights reserved. Signify reserves the right to make changes in specifications and/or to discontinue any product at any time without notice or obligation and will not be liable for any consequences resulting from the use of this publication. Application images shown may not reflect actual products advertised.

Version: October 2021



Signify New Zealand Limited
Level 3, 123 Carlton Gore Road
Newmarket, Auckland 1023
New Zealand
T: 0800 454 448 / 0800 4 LIGHT
www.philips.co.nz/lighting

Signify Australia Limited
65 Epping Road, North Ryde
NSW 2113
Australia
T: 1300 304 404
www.philips.com.au/lighting