



SmartBright LED Downlight DN029B

DN029B G2 LED8/CCT PSR-E D90 CAU

The SmartBright Downlight family is the perfect energy-efficient LED replacement for conventional downlights. It offers three solutions:;Solution 1;The energy-efficient LED replacement for conventional downlights;Essential SmartBright Downlight G3 DN029B-1 – this trailing- and leading-edge dimmable downlight is the ideal functional replacement for conventional downlights. This affordable and easy-to-install fitting delivers high energy savings without compromising on light quality.;Solution 2;Select the right colour temperature to suit your style;This hassle-free Essential SmartBright DN029B-2 downlight provides you with the flexibility to select the perfect colour temperature (Warm White/Cool White/Day Light) for the required use. Integrated with trailing/leading edge dimming capability, this affordable and easy-to-install fitting delivers high energy savings without compromising on light quality.;Solution 3;Enjoy the flexibility of a dimmable fitting without paying more;The Essential SmartBright DN029B-3 step dimming downlight is the perfect hassle-free replacement for conventional dimmable downlights. Adjust the light level directly from the switch and save money with installation as a dimmer unit is not required.

Product data

General Information		Operating and Electrical	
Lamp colour code	3000/4000/6500	Input Voltage	220 to 240 V V
Light source	No	Input frequency	50 or 60 Hz
replaceable		Power factor (min.)	0.8
Luminaire light beam spread	100°	Controls and Dimming	
Connection	Plug-in connector 2-pole	Dimmable	Yes
Protection class IEC	Safety class II (II)		

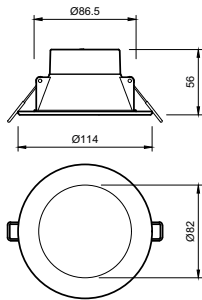
SmartBright LED Downlight DN029B

Mechanical and Housing	
Housing material	Metal–Plastic
Reflector material	Polycarbonate
Optic material	Polycarbonate
Fixation material	Stainless steel
Optical cover/lens finish	Frosted
Overall length	114 mm
Overall width	114 mm
Overall height	56 mm
Overall diameter	114 mm
Colour	White
Dimensions (height x width x depth)	56 x 114 x 114 mm (2.2 x 4.5 x 4.5 in)
Approval and Application	
Ingress protection code	IP40/IP54 front
Mech. impact protection code	IK03 [0.3 J]
Initial Performance (IEC Compliant)	
Initial luminous flux (system flux)	800 lm
Initial LED luminaire efficacy	106.00 lm/W
Lamp colour temperature	3000 4000 6500 K
Colour Rendering Index	80

Initial chromaticity	(3000K@, 0.4400, 0.40304000K@0.37600.36566500K@0.31300.3370) 6
Initial input power	7.5 W
Power consumption tolerance	+/-10%
Over Time Performance (IEC Compliant)	
Median useful life L70B50	30000 h
Application Conditions	
Ambient temperature range	-20 to +40 °C
Product Data	
Full product code	871951425177900
Order product name	DN029B G2 LED8/CCT PSR-E D90 CAU
EAN/UPC – product	8719514251779
Order code	929002531219
SAP numerator – quantity per pack	1
Numerator – packs per outer box	12
SAP material	929002531219
SAP net weight (piece)	0.230 kg



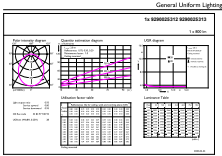
Dimensional drawing



DN029B G2 LED8 3CCT 9W D90 DIM AU

SmartBright LED Downlight DN029B

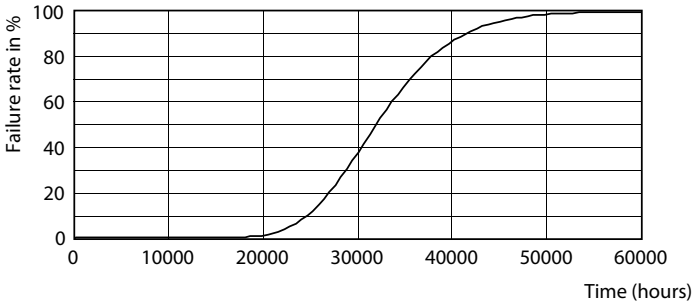
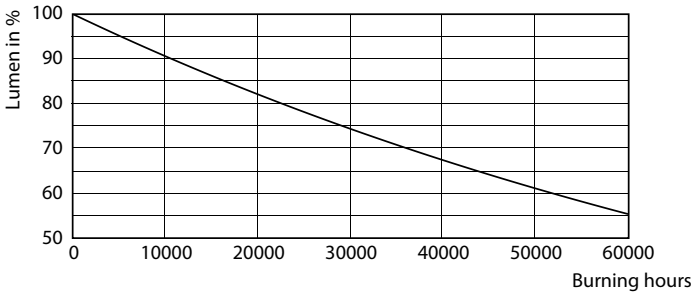
Photometric data



© Philips Lighting B.V. 2021. Philips Lighting B.V. is a registered trademark of Koninklijke Philips N.V.

Downlight DN029B G2 LED8 CCT PSR D90

Lifetime



B50L70 30K LMP

B50L70 30K LED

